

King Oliver's Dixie Syncopators

Transcriptions by Klaus Pehl 1991-93



Albert Nicholas

2nd Alto/Soprano/Clarinet

Dead Man Blues

Deep Henderson

New Wang-Wang Blues

Showboat Shuffle

Snag It

Someday Sweetheart

Sugar Foot Stomp (C)


[Sugar Foot Stomp (Bb)]

Too Late

Wa Wa Wa

What You Want Me To Do

Willie The Weeper

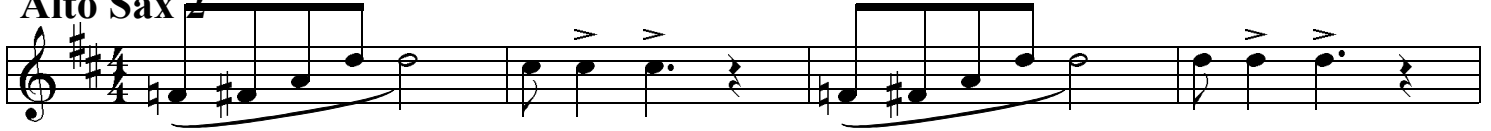
 = 180

Deep Henderson

King Oliver's Dixie Syncopators 21.4.1926

Fred Rose 1926
transcr. Klaus Pehl 28.3.1993

Alto Sax 2

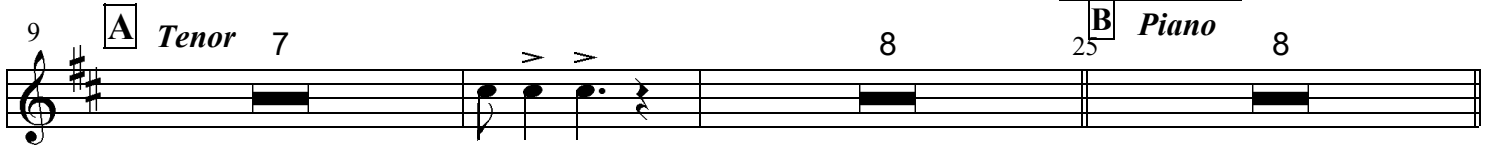


Musical staff for Alto Sax 2, measures 1-8. The staff shows a melodic line in G major with a 4/4 time signature. Measures 1-4 contain a rhythmic pattern of eighth and quarter notes. Measures 5-8 continue the melody with some rests and accents.



Musical staff for Alto Sax 2, measures 9-12. Measures 9-10 have rests, while measures 11-12 contain a melodic phrase.

9 **A** Tenor 7 8 **B** Piano 25 8




Musical staff for Tenor Saxophone and Piano, measures 9-12. Measure 9 has a rest for Tenor Saxophone. Measures 10-12 show rhythmic patterns for both instruments.

33 **Reeds**



Musical staff for Reeds, measures 33-40. The staff shows a melodic line with eighth and quarter notes.

37



Musical staff for Reeds, measures 37-40. The staff shows a melodic line with eighth and quarter notes.

41 **C** Clarinet 16 **D** Reeds 57 8 **Trumpet** 65 8



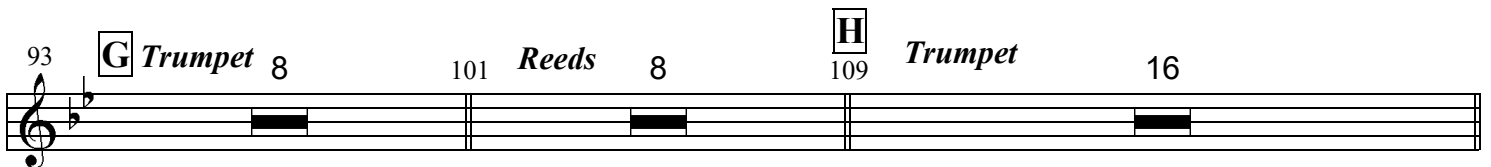
Musical staff for Clarinet, Reeds, and Trumpet, measures 41-48. Measures 41-48 show rests for all instruments.

73 **E** Interlude **Reeds** 77 16



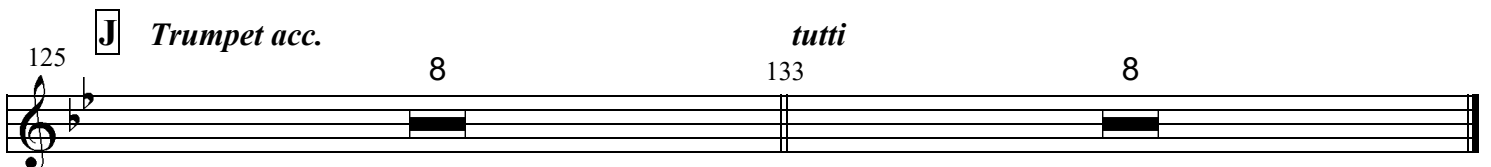
Musical staff for Interlude and Reeds, measures 73-80. Measures 73-76 contain the interlude, and measures 77-80 show rests for the reeds.

93 **G** Trumpet 8 101 Reeds 8 **H** Trumpet 109 16




Musical staff for Trumpet and Reeds, measures 93-100. Measures 93-100 show rests for all instruments.

125 **J** Trumpet acc. 8 *tutti* 133 8



Musical staff for Trumpet, measures 125-132. Measures 125-132 show rests for the trumpet.


 =212

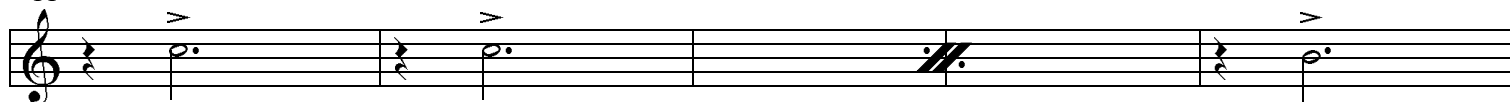
Too Late

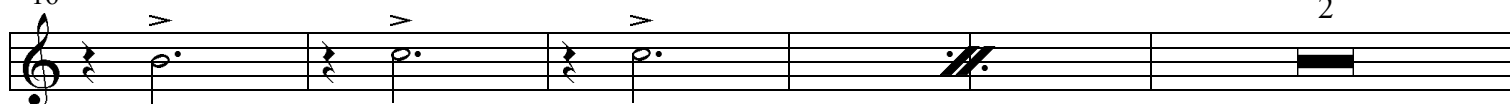
King Oliver & His Orchestra, New York 10 October 1929

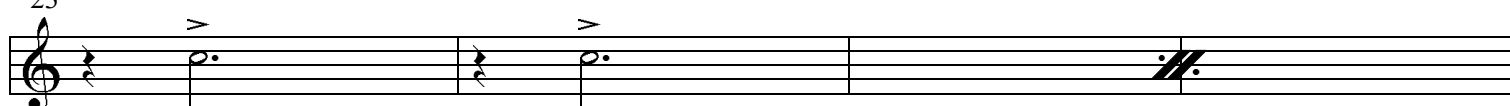
Joe Oliver - Daye Nelson 1929
transcr. Klaus Pehl 1999

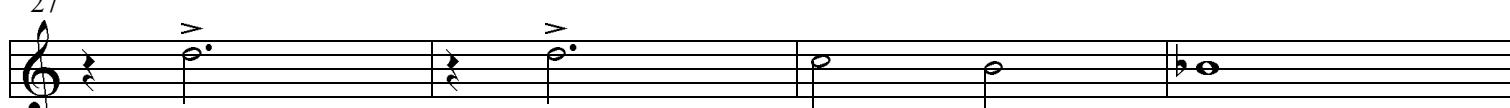
Alto Sax 2

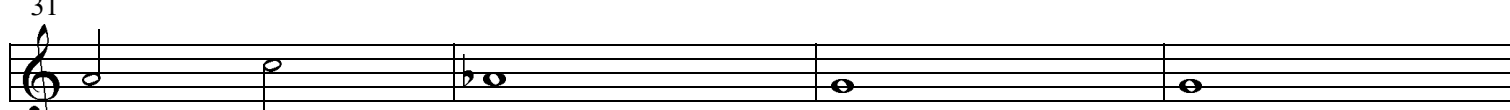
6 7A Trumpet acc.


11 

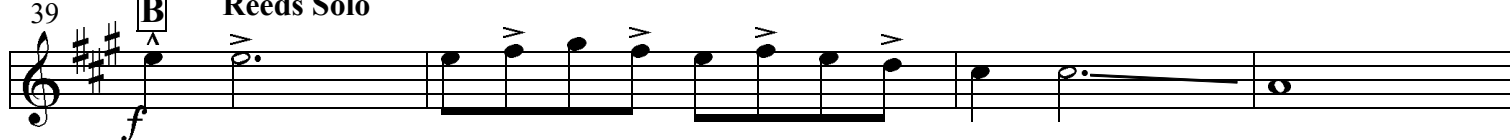
16 


23 


27 

31 

35 

39 B Reeds Solo


43 

47 

51 2

55

59

63

67 1

71 **C** Verse

75

79

83 2 87 **D** Tenor Solo 32 119 **E** tb-Solo 16

135 Piano Solo 16 15 **G** *f*

155

Detailed description: The image shows a musical score for a piece in A major. It consists of ten staves of music. The first six staves (measures 51-67) are vocal lines. The seventh staff (measures 71-75) is the start of a 'Verse' in common time (C). The eighth staff (measures 79-83) contains whole notes. The ninth staff (measures 83-119) features instrumental solos: a 2-measure Tenor Solo in D major (measures 87-91), a 32-measure Tenor Solo in D major (measures 91-119), and a 16-measure Trombone Solo in E major (measures 119-135). The tenth staff (measures 135-155) features a 16-measure Piano Solo in G major (measures 151-167), marked with a forte (*f*) dynamic. The score includes various musical notations such as accidentals, slurs, and dynamic markings.

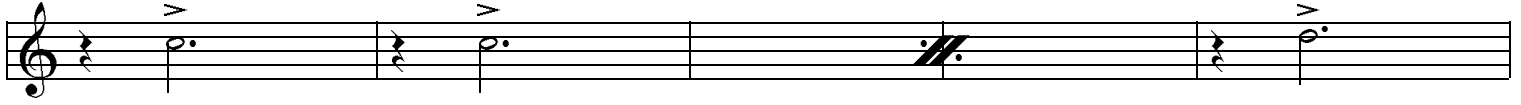
159



163



167



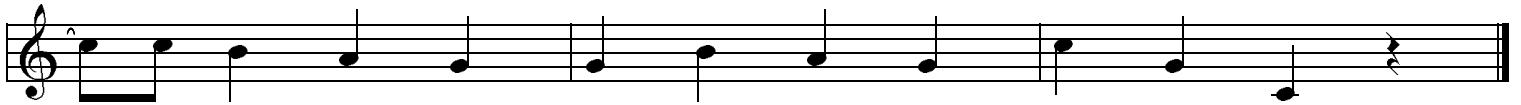
172



176



180



♩ = 108

What You Want Me To Do

King Oliver & His Orchestra, New York 10 Oct. 1929

Joe Oliver 1929
transcr. Klaus Pehl 1999

Alto Sax 2

9 **A** Reeds Solo

21 **B** Tuba & Cornet

37 **C** Reeds

53 **D** Piano

69 **E** Clar. & Brass

rit.

King Oliver's Dixie Syncopators

Transcriptions by Klaus Pehl 1991-93



Instruments

Clarinet/Soprano

Trombone

Alto/Soprano/Clar.

Banjo

Tenor/Clarinet

Tuba

1st Trumpet

Piano

2nd Trumpet

Drums