

Louis Armstrong & His Orchestra

Vocal



Voices for:

Body And Soul

Love You Funny Thing

Dinah

Mahogany Hall Stomp

Home

On Treasure Island

I Double Dare You

Them Their Eyes

I Surrender Dear

*When It's Sleepy Time Down
South*

Transcriptions by Klaus Pehl 1998/2001 © 2024

1 Body And Soul

Louis Armstrong & His Orchestra, Oct 9, 1930

Green, Heymann, Sauer, Eaton 1930

Transcr. Klaus Pehl 1998

 = 108

Vocal



4 5 **A** 16 21 **B** 4 4

29 **C** 7 36 **D** 2

38 **E**

42

46

50

54 **F**

56

58

60

My heart is sad and lone - ly, For You I sigh, for you, dear on - ly
Why have - n't you seen it? I'm all for you, Bo - dy and Soul.
I spend my days in long - ing, And won - d'ring why it's me you're wrong - ing.
I tell you I mean it, I'm all for you Bo - dy and Soul.
I can't be - lieve it, It's hard to con - ceive it That
you'd turn a - way ro - mance.
Are you pre - tend - ing ,it looks like the end - ing, Un -
less I could have one more chance to prove, dear,

62 **G**

My life a wreck you're mak - ing, You know I'm yours for just the tak - ing;

66

I'd glad - ly sur - ren - der my - self to you, Bo - dy and Soul.

70 **H**

78 **J**

86 **K**

1 Dinah

Louis Armstrong & His Orchestra, New York, April 5, 1930

Lewis, Young, Akst 1930
Transcr. Klaus Pehl 1998

 =212

Vocal

A Reeds

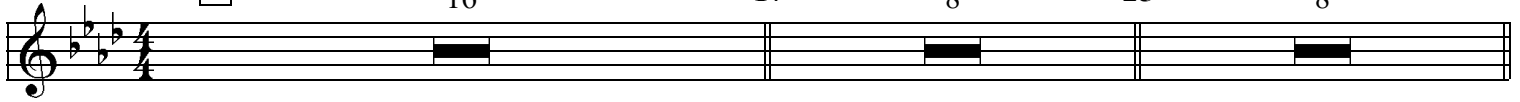
16

17

8

25

8



33 **C** Vocal



Din - ah, is there an - y - one fin - er in the state of Car - o -

37




lin - a If there is and you know 'er show 'er to me.

41



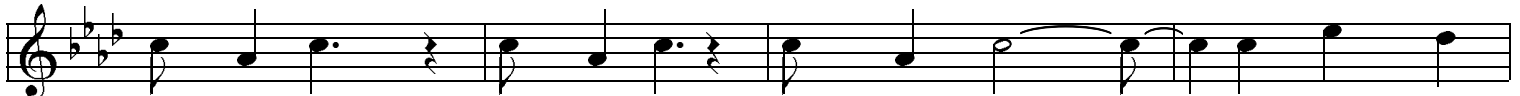
Din - ah, with her Dix - ie eyes blas - in', how I love to sit and

45




gase in - to the eyes of Din - nah Lee.

49



Ev - 'ry night why do I shake with fright be - cause my

53



Din - ah might change her mind a - bout me. ----

Scat Solo break

57



Din - ah if she wan - dered to Chin - a I would hop an o - cean -

61



lin - er, --

Just to be with Din - ah Lee.

Tbn. Solo Break

1

65

F *Tbn. Solo*

16

E *Tenor*

81

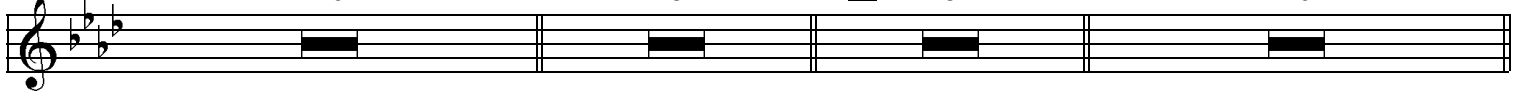
F *1st Tpt. Solo*

89

8

97

16



2

113 8 121 8 129 24 153 8

161 **G** 24 185 8

1 Home

Louis Armstrong & His Orchestra, Jan 27, 1932

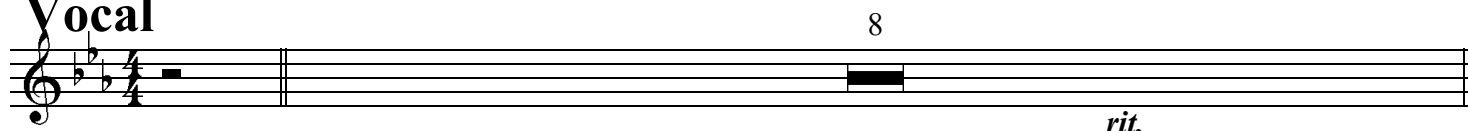
Van Steeden - Clarkson 1931


Transcr. Klaus Pehl 1998

 = 180

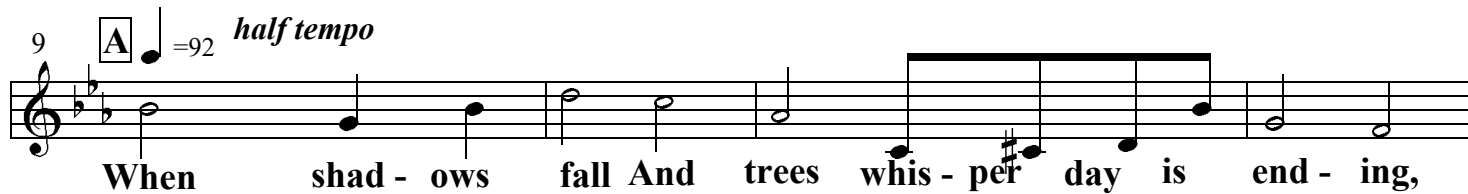
Vocal

8 *rit.*



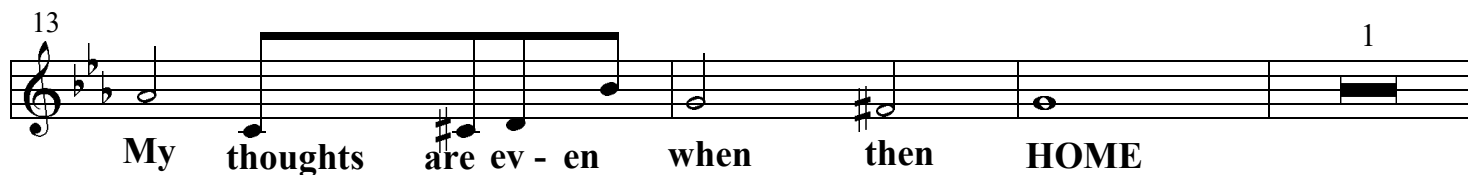
9 **A**  = 92 *half tempo*

When shad - ows fall And trees whis - per day is end - ing,



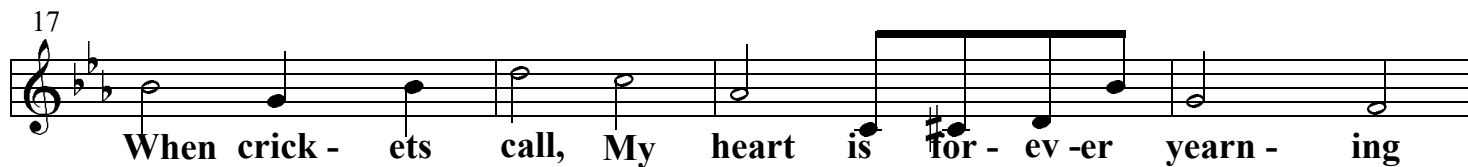
13

My thoughts are ev - en when then HOME



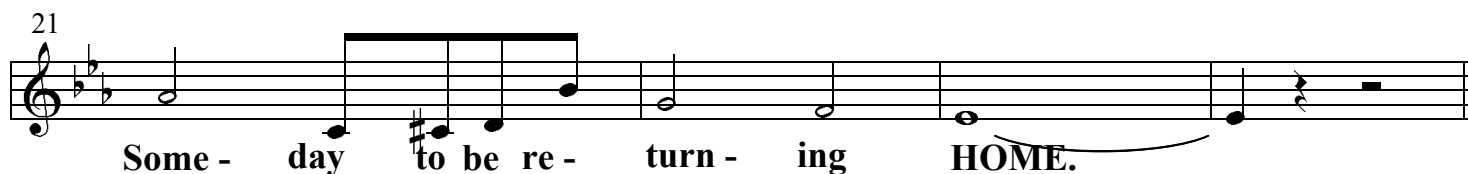
17

When crick - ets call, My heart is for - ev - er yearn - ing



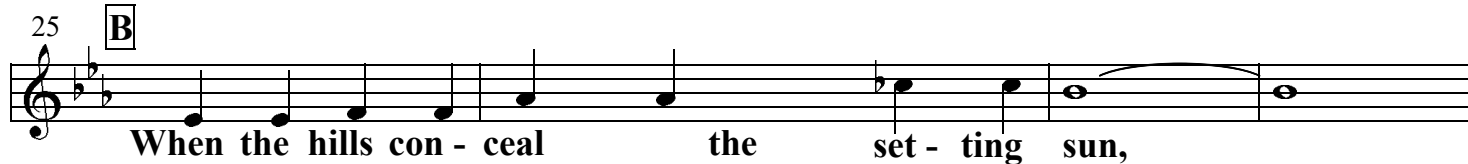
21

Some - day to be re - turn - ing HOME.



25 **B**

When the hills con - ceal the set - ting sun,



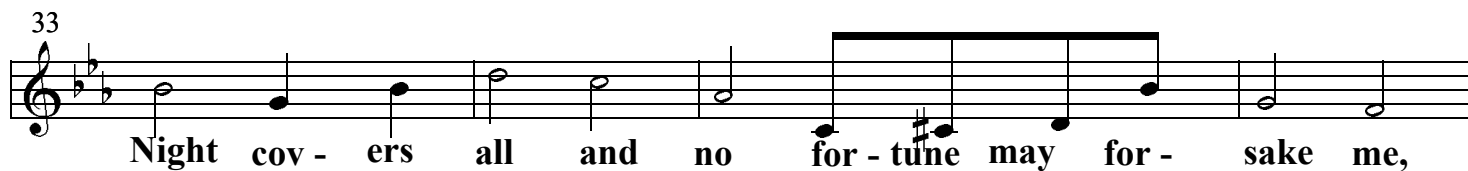
29

Stars be - gin a peep - in', one by one



33

Night cov - ers all and no for - tune may for - sake me,

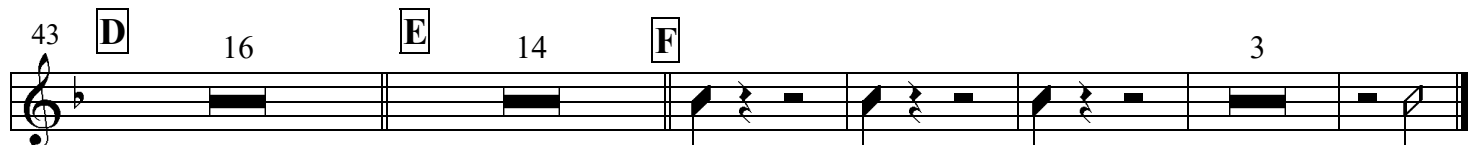


37 **C** 2

Sweet dreams will ev - er take me HOME.



43 **D** 16 **E** 14 **F** 3



I Double Dare You

=212

Louis Armstrong & His Orchestra, Los Angeles, January 12, 1938

J. Eaton - T. Shand 1937
transcr. Klaus Pehl, 1998

Vocal

8 A 16 B 20

45 C

I doub - le dare you to sit o - ver here,

49 I doub - le dare you to lend me your ear, take off your high

54 hat and let's get friend - ly, don't be a scare'd

58 cat so what do you care can't you take a dare?

61 D

I doub - le dare you to kiss me and then

65 I doub - le dare you to kiss me a - gain, And if that look in

70 your eyes mean what I'm think - ing of I doub - le dare

74 you to fall in love with me, hot mam - ma,

78 2 E 16 20 G 16 H 20

I doub - le dare you.

I Surrender Dear

Louis Armstrong & His Orchestra, Chicago, April 20, 1931

Clifford - Barris 1930
transcr. Klaus Pehl 1998

 = 100

1

Vocal **A** 1st Tpt. Melody $\frac{7}{8}$

17 **B**

8

25

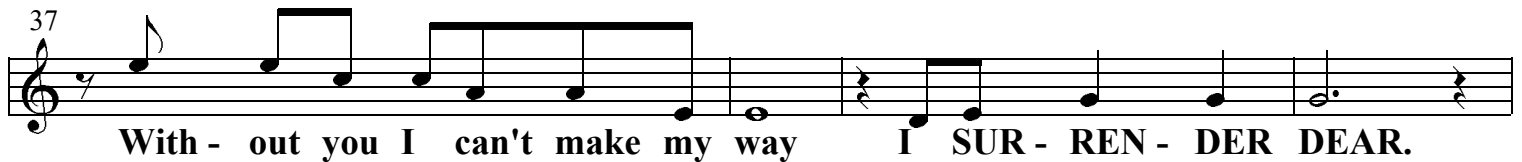
Reeds 8



33 **C** Vocal



We've played the game of stay a - way, But it costs more than I can pay,



With - out you I can't make my way I SUR - REN - DER DEAR.



I may seem proud I may act gay It's just a pose, I'm not that way



'cause deep down in my heart I say: I SUR - REN - DER DEAR.



Lit - tle mean things we were do - ing. Most have been part of the game.



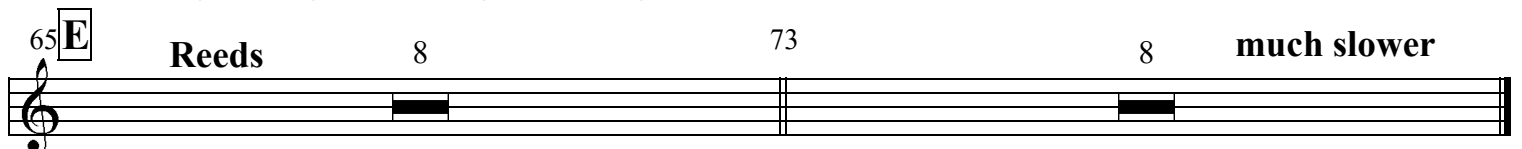
Lend - ing a spice to the woo - ing. But I don't care who's to blame.



When stars ap - pear And shad - ows fall Why then you hear my poor heart call



To you my love, my life, my all. I SUR - REN - DER DEAR.



Reeds

8

73

8

much slower

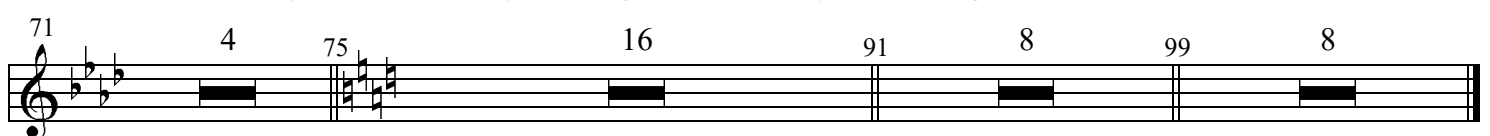
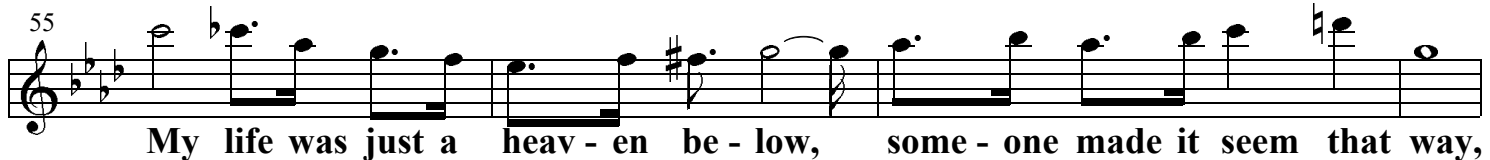
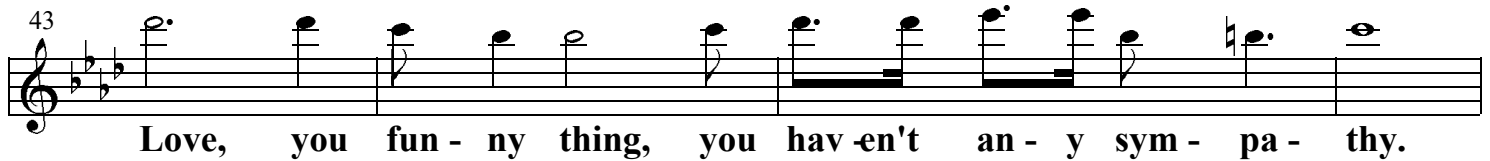
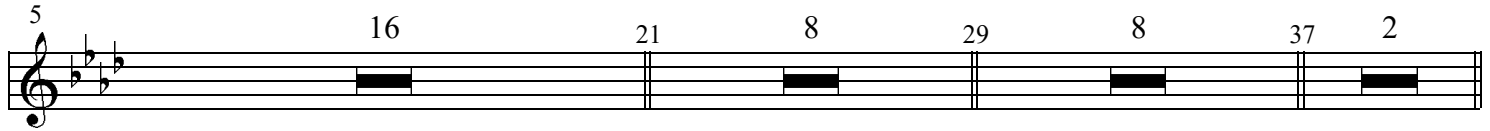
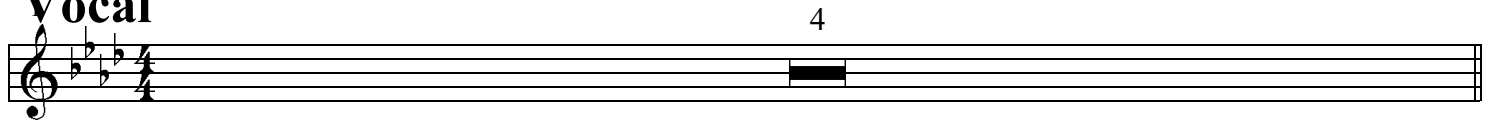
Love You Funny Thing

Louis Armstrong & His Orchestra Mar 2, 1932

Turk & Ahlert 1932

transcr. Klaus Pehl 1998

Vocal



1 Them Their Eyes

Louis Armstrong & His Orchestra, Chicago, April 29, 1935


Pinkard - Tracey - Tauber 1930

transcr. Klaus Pehl 1998


 =180

Vocal

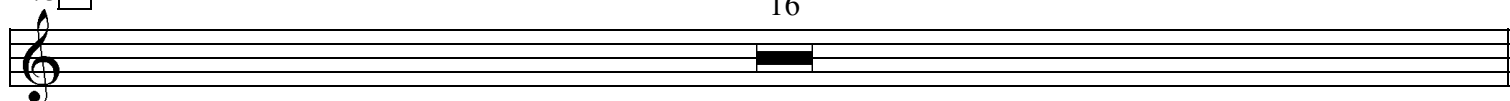
4 **A** 16 21 **B** 16 37 **C** 4



41 **D** 8 49 **E** 4 53 **F** 4 57 **G** 16



73 **H** 16




89 **J**



I fell in love with you first time I looked in - to **THEM THERE EYES**

93



You've got a cer - tain lil' cute way of flir - tin' with **THEM THERE EYES**

97



They make me feel hap - py they make me blue

101



No stall - in' I'm fall - in' go - ing in a big way for sweet lit - tle you

105 **K**



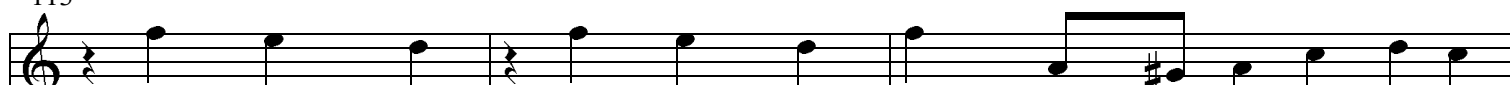
My heart is jump - in' you sure start - ed some - thing with **THEM THERE EYES**

109



You'd bet - ter watch them if you're wise

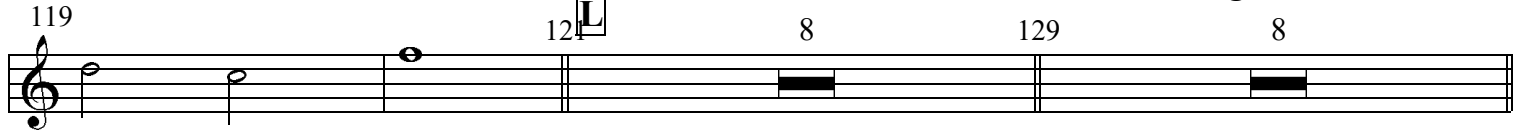
113



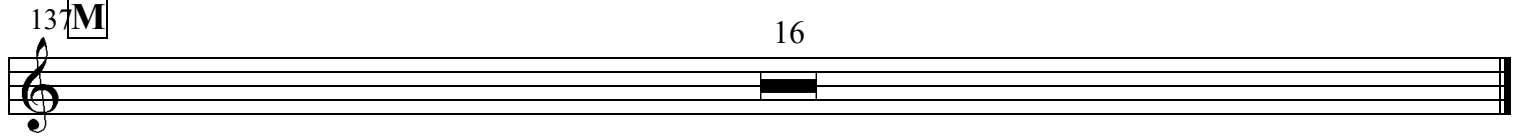
They spark - le they bub - ble, they're gon - na get you in a



whole lot of troub - le. You're o - ver - work - in' 'em there's dan - ger lurk - in' in



THEM THERE EYES.



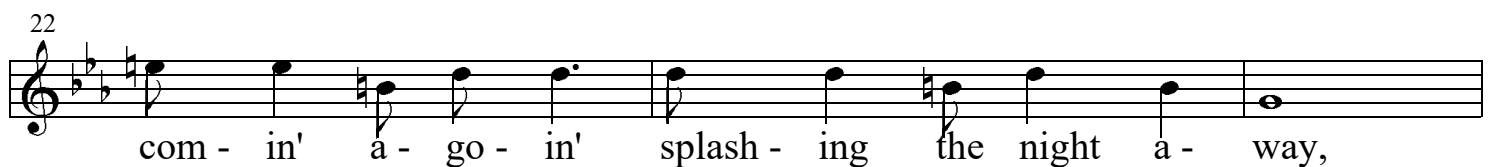
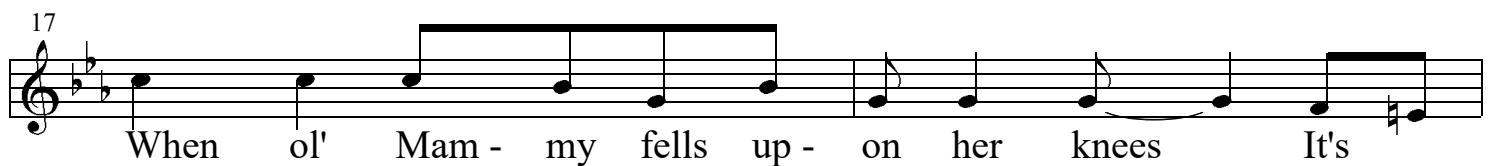
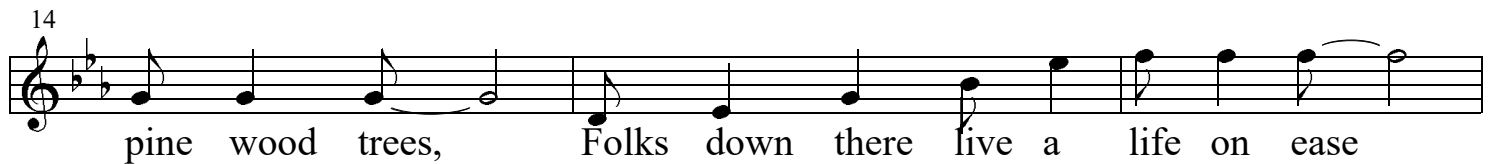
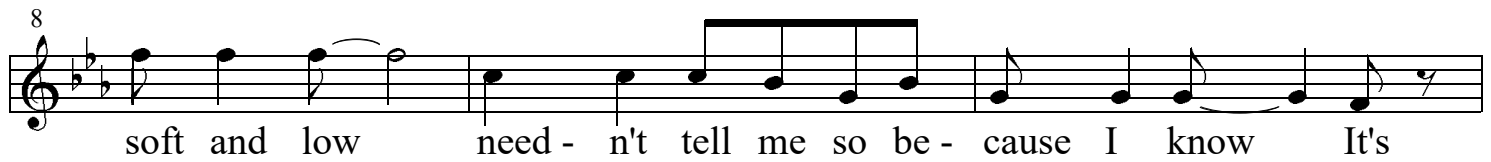
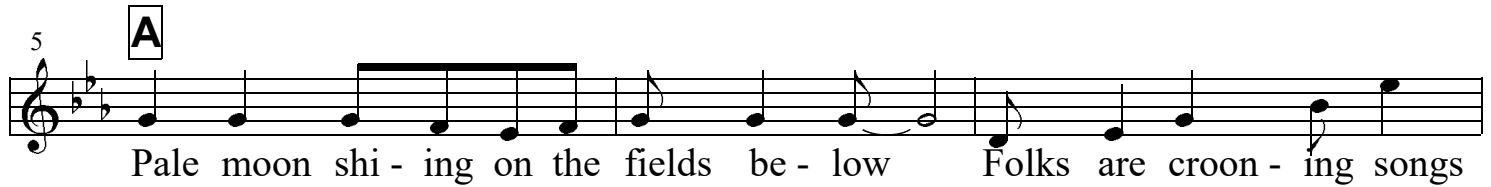
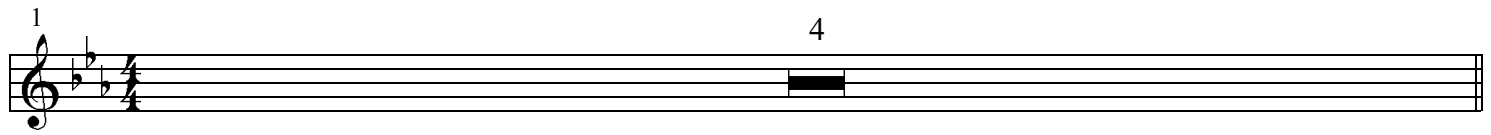
When It's Sleepy Time Down South

Louis Armstrong & His Orchestra, 16. Nov. 1941

Rene-Muse 1931

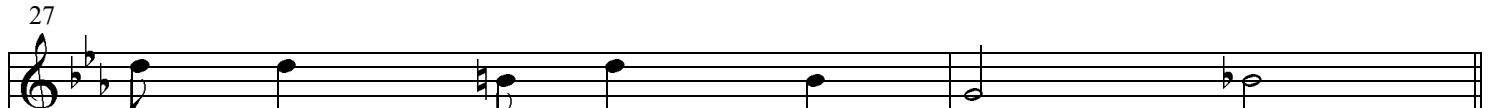
transcr. Klaus Pehl 2001

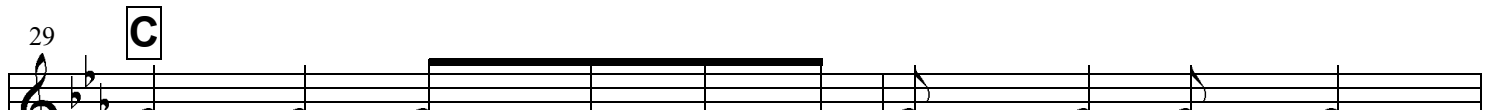
Vocal




25

 Hear those ban - jos rng - in' the folks are a - sing - in',

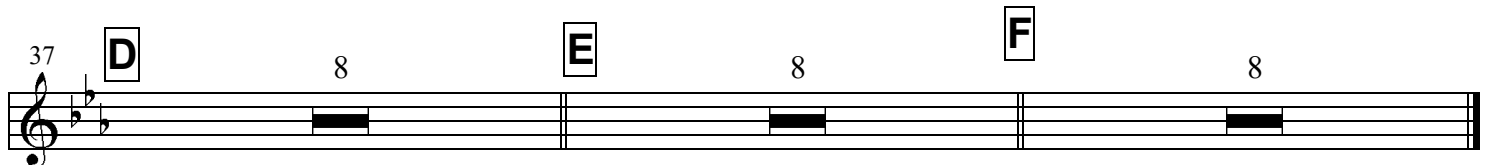
27

 They dance till break of day ---

29 **C**

 Dear old South - land with it's dream - y songs,

31

 Take me back there where I be - long, How I'd love to be in

34

 Mam - my's arms When It's SLEEP - Y TIME DOWN SOUTH.

37 **D** 8 **E** 8 **F** 8

 This line contains three measures of accompaniment. The first measure is marked with a boxed 'D' and an '8'. The second measure is marked with a boxed 'E' and an '8'. The third measure is marked with a boxed 'F' and an '8'.

Louis Armstrong & His Orchestra

Transcriptions by Klaus Pehl 1998/2001



Voices for:

1st & 2nd Altosax *Guitar*

Tenorsax *Bass*

1st, 2nd & 3rd Trumpet *Piano*

Trombone *Drums*

Vocal