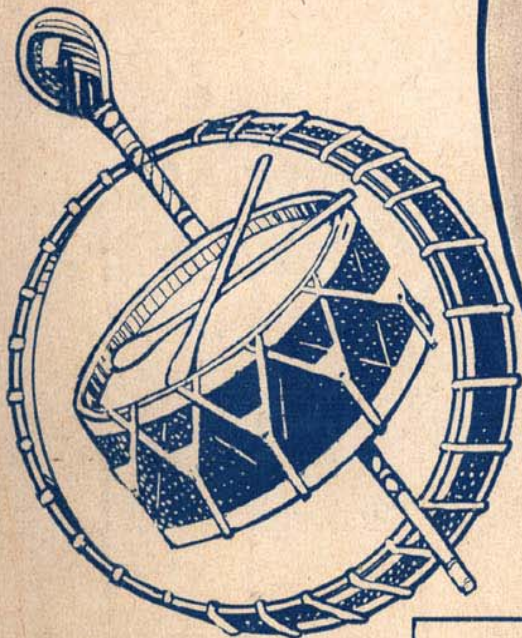
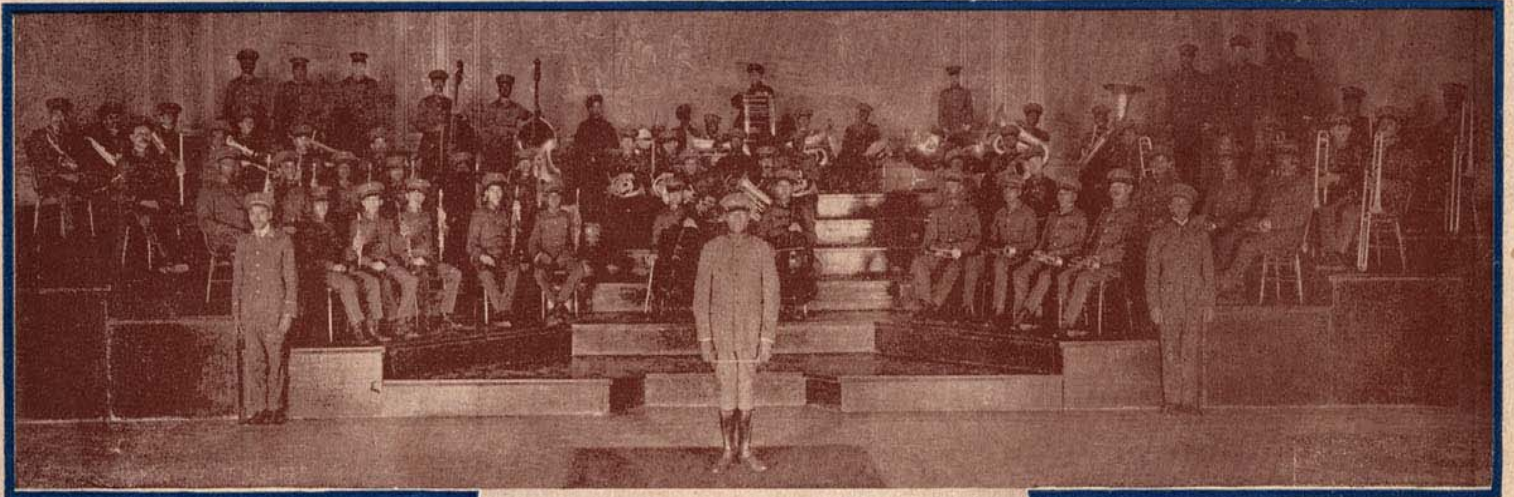


GOOD NIGHT ANGELINE

ADDISON AMUSEMENTS Inc. *Presents*

Lieut. JAMES REESE EUROPE AND HIS FAMOUS 369th U.S. INFANTRY "HELL FIGHTERS" BAND



GOOD NIGHT ANGELINE . 50
ON PATROL IN NO MAN'S LAND 50

By Lieut. JAMES REESE EUROPE, NOBLE SESSLER
and EUBIE BLAKE

M. Witmark & Sons
New York · Chicago · Philadelphia · Boston · San Francisco · London

1-SIZE
M1630.2
E973
SHEET
MUSIC

Goodnight Angeline

Lieut. JAMES REESE EUROPE
Lieut. NOBLE SISSLE
and EUBIE BLAKE

Moderately not too fast

The piano introduction consists of two staves. The right hand plays a series of chords and eighth notes, while the left hand provides a bass line. Dynamics include *mf* and *sfz*.

Hear dat ole town clock a - strik-ing, An - ge - line;
Hear dat ole church bell a - ring-ing, An - ge - line;

The piano accompaniment continues with chords and a bass line. Dynamics include *mf* and *p*.

S'pose it's time I should be hik - ing, An - ge - line. — Sho - ly hates to
Hear dat ole choir sweet - ly sing - ing, An - ge - line. — They're all tell - ing

The piano accompaniment continues with chords and a bass line.

leave you, dear-ie, 'deed I do; Hon-ey chile, when you aint near me, I feel blue. —
of our happy wed-ding day, No more, "An - gie" will I ev - er have to say: —

The piano accompaniment continues with chords and a bass line.

REFRAIN

Good-night, my An-ge-line,— Fare-well, my gal so fine..Leav-ing-time is griev-ing-time,—

p-f

Hates to part with ba-by mine;— Night time was made-for-lov-ing, It's the

right time for tur-tle dov-ing; Kiss-es taste much fin-er, Hug-ging seems di-vin-er, But

I must leave you, hon-ey, 'Cause I'm feel-ing fun-ny, Good-night, An-ge-line! — -line! —

1. 2. *sfz*

KISS ME AGAIN

LYRIC BY HENRY BLOSSOM AND THE SWEETEST MELODY EVER WRITTEN BY VICTOR HERBERT

ORIGINALLY INTRODUCED BY FRITZI SCHEFF IN THE DELIGHTFUL MLE. MODISTE
THE WELL KNOWN PRIMA DONNA COMIC OPERA

It is Still Being Featured by Her and Hundreds of Others

ONE OF THE MOST BEAUTIFUL SONGS IN THE WITMARK BLACK AND WHITE SERIES

PUBLISHED AS FOLLOWS

SOLO, FOUR KEYS—F, (a to f) G, (b to g) A, (c# to a) Bb, (d to bb) - 60c. each, NET OCTAVO—OR MIXED VOICES - 25c. NET
DUET, in A, Soprano or Tenor (c# to a) lead and Contralto or Baritone (a to g#) - 75c. NET WALTZ. for PIANO, - 60c. NET

Valse lento

Sweet sum-mer breeze, whis-per-ing trees, Stars shin-ing soft-ly a-bove; — Ros-es in
ppp molto espress.
bloom, waft-ed per-fume, Sleep-y birds dream-ing of love. — Safe in your arms, far from a-
pp
larms, Day-light shall come but in vain. — Ten-der-ly pressed close to your breast,
ten.

Copyright MCMXV By M. WITMARK & SONS



THE ABOVE CAN BE HAD WHEREVER MUSIC IS SOLD OR OF THE PUBLISHERS
M. WITMARK & SONS — WITMARK BUILDING — NEW YORK
Price, Solo 60c. NET Duet 75c. NET Octavo for Mixed Voices 25c. NET Waltz for Piano 60c. NET

If you are interested in Beautiful Songs (Sacred or Secular) send for our Catalog containing complete
Poems and Thematic quotations from some of the most beautiful numbers in the well-known

WITMARK BLACK AND WHITE SERIES

SEND STAMP FOR POSTAGE

