

# *Shuffle Along*



ORCHESTRA SCORE

*of*

“SHUFFLE ALONG”

*by*

SISSLE and BLAKE

## *Bass*

*Re-edited by Klaus Pehl © 2022*

# Overture - Shuffle Along (1921)

Music by Eubie Blake

$\text{♩} = 84$

**Bass**

1

7

13

19 *"Shuffle Along" (Verse)*

27

35 *"Shuffle Along" (Chorus)*

1

43

51

1

59

65

67 *"Love Will Find a Way"*

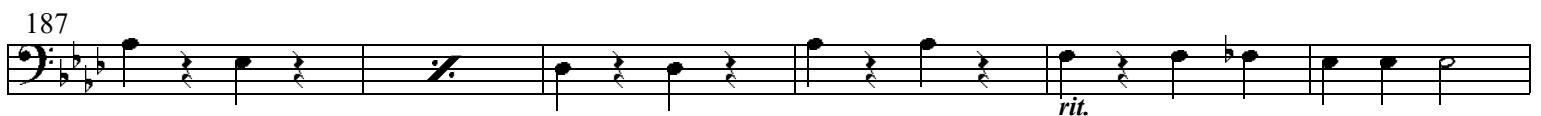
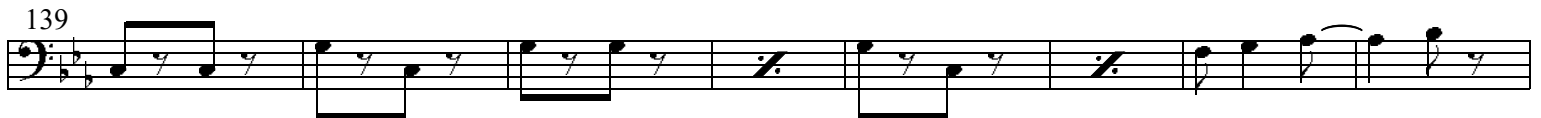
75

83

91

97 "In Honeysuckle Time"

2



198 "I'm Just Wild About Harry"

198 *mf* Musical notation for measures 198-205.

206

206 Musical notation for measures 206-213.

214

214 Musical notation for measures 214-221.

222

222 Musical notation for measures 222-227.

228

228 Musical notation for measures 228-233.

234 *Moderato* "I'm Craving For That Kind of Love"

234 *f* Musical notation for measures 234-241.

242

242 Musical notation for measures 242-247. Includes markings *molto rit.* and *a tempo*.

248 *Allegro*

248 Musical notation for measures 248-251.

252 "Bandana Days"

252 Musical notation for measures 252-259.

260

260 Musical notation for measures 260-267.

268

268 Musical notation for measures 268-275.

276

276 Musical notation for measures 276-281.

282 *Finale*

282 *ff* Musical notation for measures 282-285.

286

286 Musical notation for measures 286-293.



# Opening Chorus - Election Day

Music by Eubie Blake

Bass

$\text{♩} = 116$

9

17

25

33

41

49

57

61 *pizz.* *arco* *pizz.* *arco*

69 *pizz.* *arco*

75 1. 2.

79

87

95

103 *pizz.* *arco*

111 *pizz.* *arco*

119

127

135

143

147

155

163

171

177 1. 179

181

# "Bandana Days"

Music by Eubie Blake

♩ = 112

## Bass

First staff of music, bass clef, 2/4 time signature. It begins with a double bar line and a fermata over the first measure. The melody consists of eighth and quarter notes.

## 5 Voice

*pizz.*

Second staff of music, bass clef, 2/4 time signature. It begins with a double bar line and a fermata over the first measure. The melody consists of eighth and quarter notes.

9

Third staff of music, bass clef, 2/4 time signature. It begins with a double bar line and a fermata over the first measure. The melody consists of eighth and quarter notes.

13

*pizz.*

*arco*

Fourth staff of music, bass clef, 2/4 time signature. It begins with a double bar line and a fermata over the first measure. The melody consists of eighth and quarter notes.

17

Fifth staff of music, bass clef, 2/4 time signature. It begins with a double bar line and a fermata over the first measure. The melody consists of eighth and quarter notes.

21 Chorus

Sixth staff of music, bass clef, 2/4 time signature. It begins with a double bar line and a fermata over the first measure. The melody consists of eighth and quarter notes.

25

Seventh staff of music, bass clef, 2/4 time signature. It begins with a double bar line and a fermata over the first measure. The melody consists of eighth and quarter notes.

29

Eighth staff of music, bass clef, 2/4 time signature. It begins with a double bar line and a fermata over the first measure. The melody consists of eighth and quarter notes.

33

Ninth staff of music, bass clef, 2/4 time signature. It begins with a double bar line and a fermata over the first measure. The melody consists of eighth and quarter notes.

37

Tenth staff of music, bass clef, 2/4 time signature. It begins with a double bar line and a fermata over the first measure. The melody consists of eighth and quarter notes.

41

Eleventh staff of music, bass clef, 2/4 time signature. It begins with a double bar line and a fermata over the first measure. The melody consists of eighth and quarter notes.

45

Twelfth staff of music, bass clef, 2/4 time signature. It begins with a double bar line and a fermata over the first measure. The melody consists of eighth and quarter notes.

49

1.

53.

Thirteenth staff of music, bass clef, 2/4 time signature. It begins with a double bar line and a fermata over the first measure. The melody consists of eighth and quarter notes.

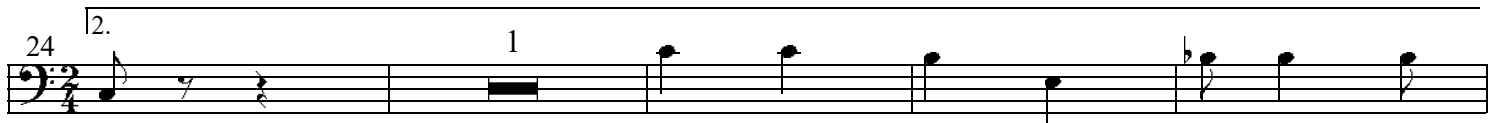


# "Encore" (Bandana Days)

Music by Eubie Blake

♩ = 112

## Bass



# "Uncle Tom and Old Black Joe"

Music by Eubie Blake

♩ = 120

## Bass

Measures 1-4 of the bass line. The music is in 2/4 time with a key signature of two flats. The notes are: 1. G2, A2, B2, C3; 2. D3, E3, F3, G3; 3. A3, B3, C4, D4; 4. E4, F4, G4, A4.

Measures 5-8 of the bass line. Measure 5 starts with a fermata over G4. The notes are: 5. G4, F4, E4, D4; 6. C4, B3, A3, G3; 7. F3, E3, D3, C3; 8. B2, A2, G2, F2.

Measures 9-12 of the bass line. Measure 9 is labeled "Voice". The notes are: 9. G2, A2, B2, C3; 10. D3, E3, F3, G3; 11. A3, B3, C4, D4; 12. E4, F4, G4, A4.

Measures 13-16 of the bass line. Measure 13 is a whole rest. Measure 14 is a whole rest. Measure 15: G4, F4, E4, D4. Measure 16: C4, B3, A3, G3.

Measures 17-28 of the bass line. Measures 17-28 are whole rests. Measure 29 is a whole rest.

Measures 29-40 of the bass line. Measures 29-30 are whole rests. Measure 31: G4, F4, E4, D4. Measure 32: C4, B3, A3, G3. Measure 33: F3, E3, D3, C3. Measure 34: B2, A2, G2, F2. Measure 35: E2, D2, C2, B1. Measure 36: A1, G1, F1, E1. Measure 37: D1, C1, B0, A0. Measure 38: G0, F0, E0, D0. Measure 39: C0, B0, A0, G0. Measure 40: F0, E0, D0, C0.

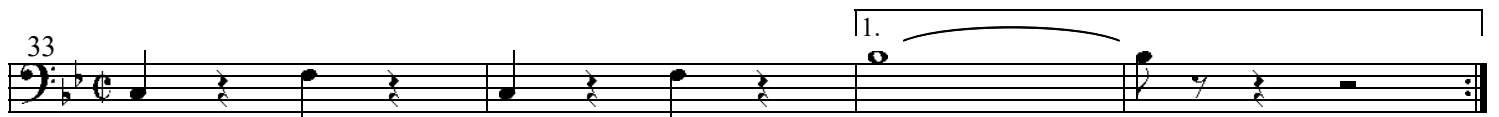
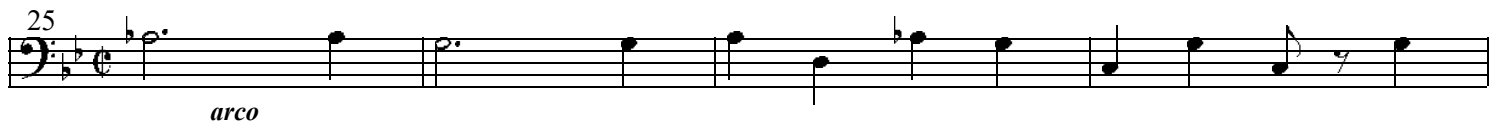
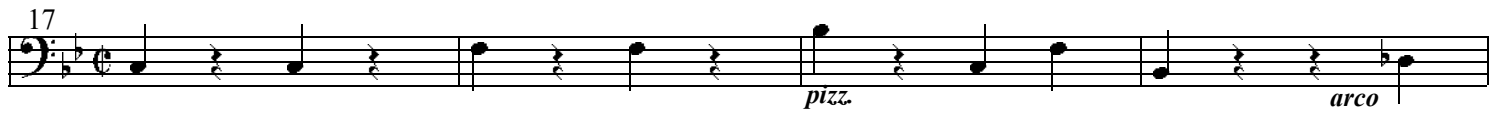
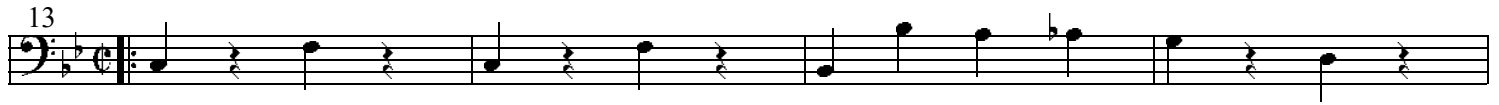
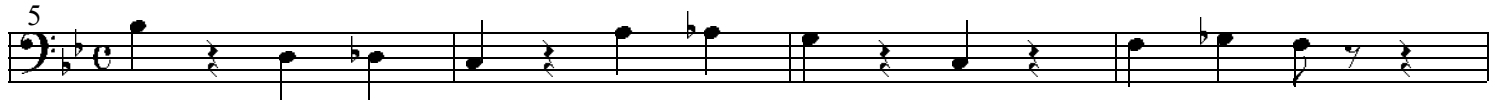
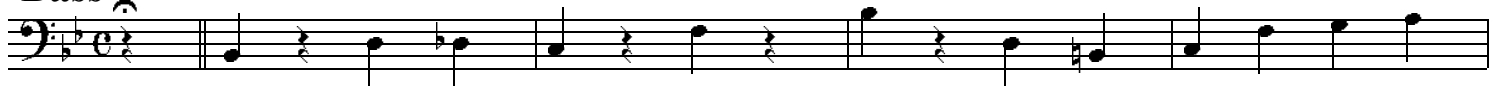
Measures 41-48 of the bass line. Measures 41-48 are whole rests. Measure 49 is a whole rest.

# "In Honeysuckle Time"

Music by Eubie Blake

♩ = 108

## Bass

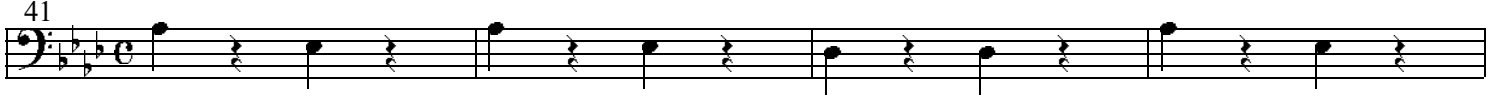
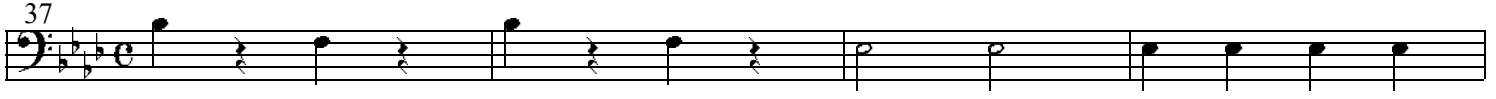
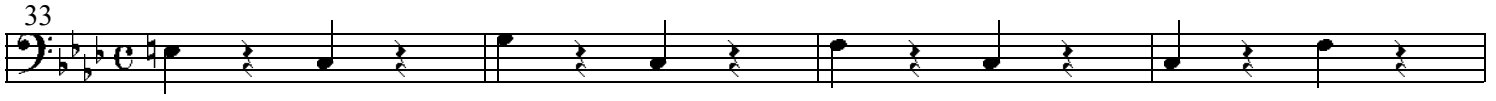
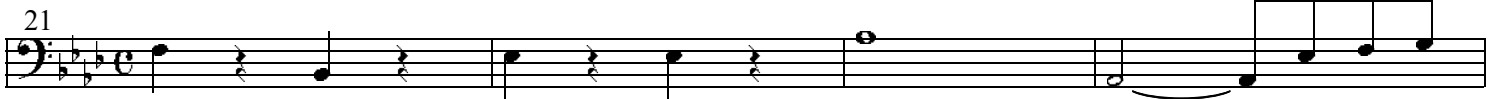
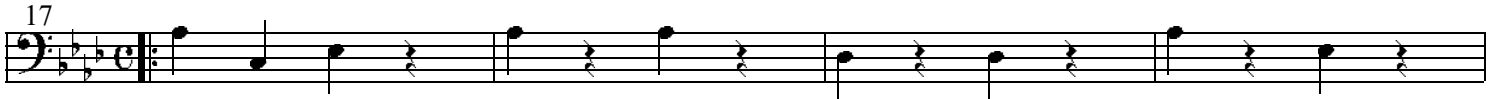
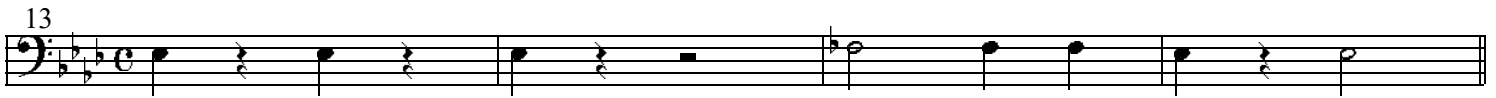
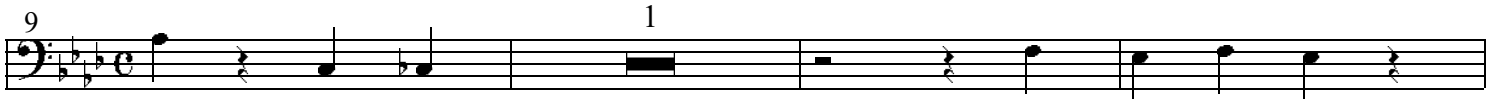
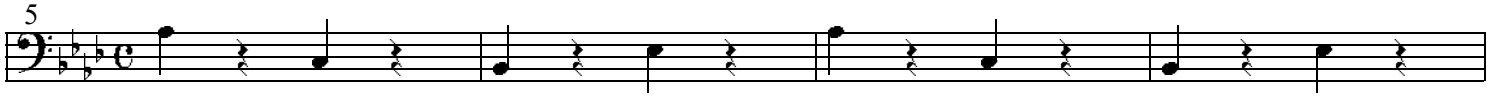


♩=108

# "Gypsy Blues"

Music by Eubie Blake

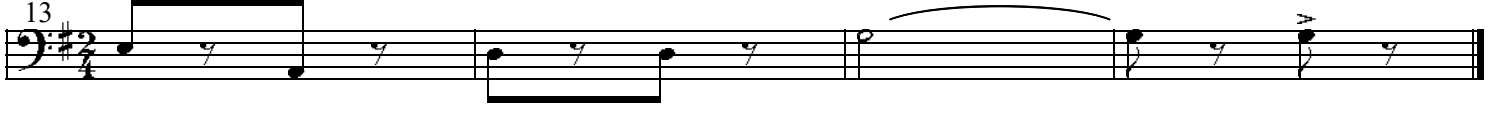
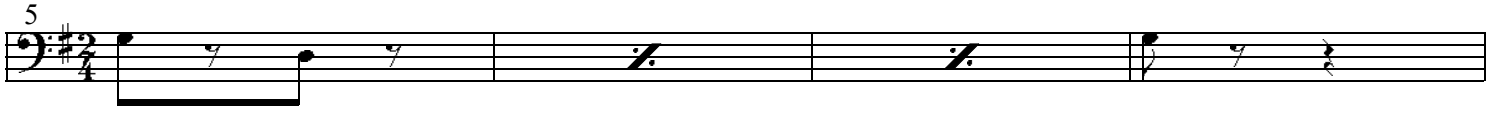
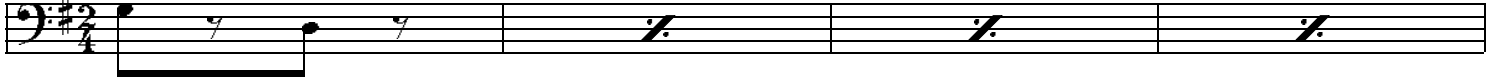
## Bass



**"Humph Music (Entrance of Crowds)"**  
Music by Eubie Blake

♩ = 112

**Bass**



♩=112

# "Finale - Act 1"

Music by Eubie Blake

## Bass

3

5

7

9

13

17

19

21

23

25

27

29

31

33

37

39

41

45

47

2

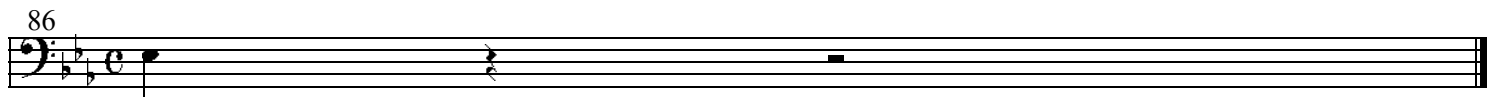
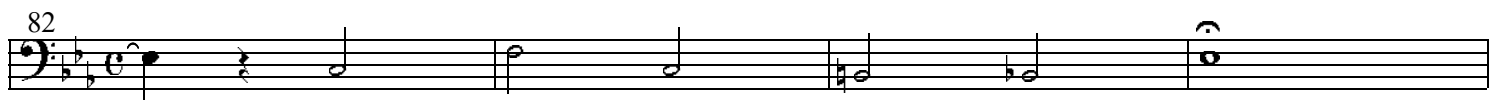
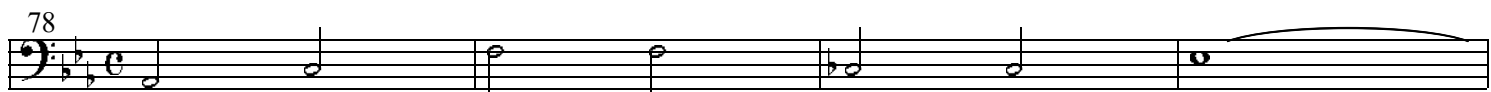
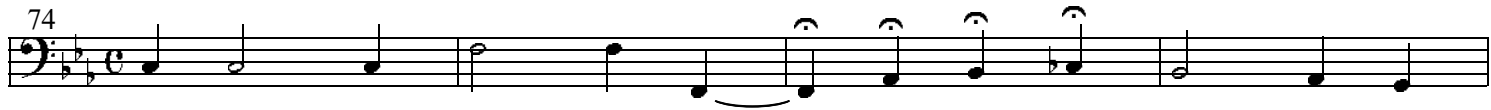
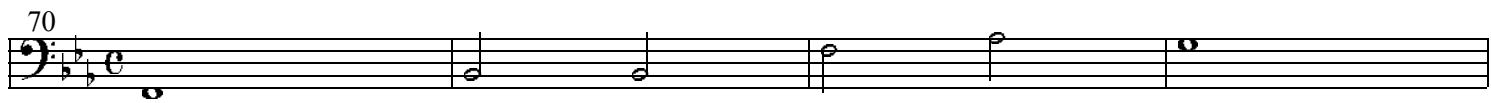
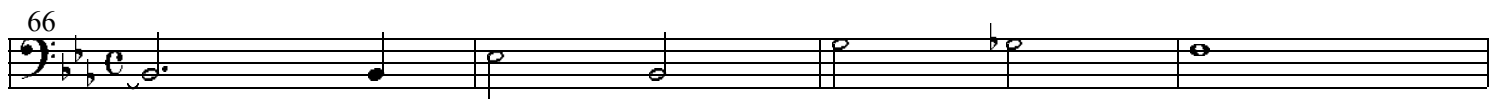
49

50

51

54

58



# "Shuffle Along"

Music by Eubie Blake

♩ = 112

## Bass

## Encore

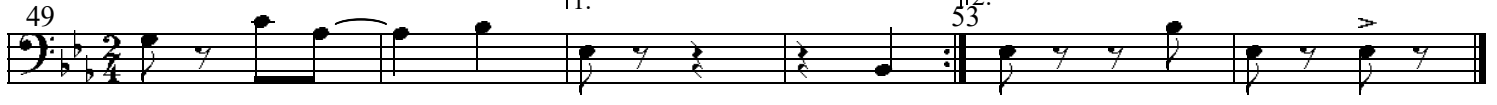
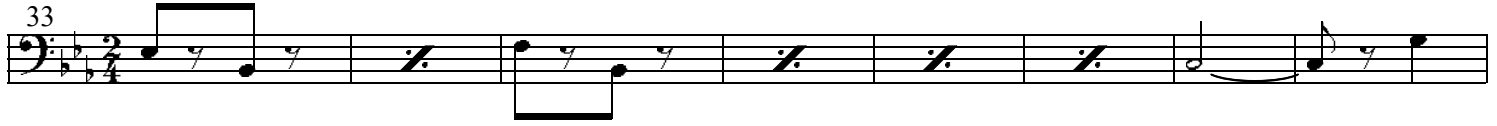
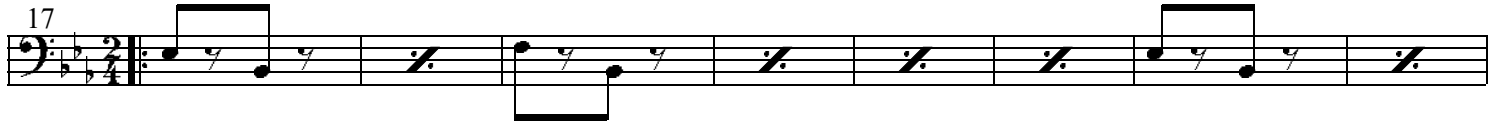
D.S. Chorus



# "I'm Just Wild About Harry"

Music by Eubie Blake

## Bass



# "Sing Me To Sleep, Dear Mammy"

Music by Eubie Blake

## Bass

The bass line is written in 2/4 time with a key signature of two flats (B-flat and E-flat). The score consists of ten staves of music. The first staff begins with a treble clef and a common time signature, which changes to 2/4 at the start of the second staff. The music features a variety of rhythmic patterns, including eighth and sixteenth notes, and rests. There are several first and second endings marked with '1.' and '2.'. Performance instructions include 'pizz.' (pizzicato) at measure 31 and 'arco' (arco) at measure 35. Measure numbers 7, 10, 11, 15, 19, 23, 27, 31, 35, 39, and 43 are indicated at the beginning of their respective staves. The piece concludes with a double bar line at the end of the tenth staff.

♩ = 92 **"Everything Reminds Me Of You"**  
Music by Eubie Blake

**Bass**

Musical notation for the bass line, consisting of eight staves. The key signature is B-flat major (two flats) and the time signature is common time (C). The notation includes various rhythmic values such as eighth, quarter, and half notes, as well as rests and accidentals. Measure numbers 1, 3, 5, 7, 15, 19, 23, 27, 31, and 35 are indicated at the start of their respective staves. A first ending bracket labeled '1.' spans measures 35-36, and a second ending bracket labeled '38.' spans measures 37-38. A dynamic marking 'v' (forte) is present at the end of the second ending.

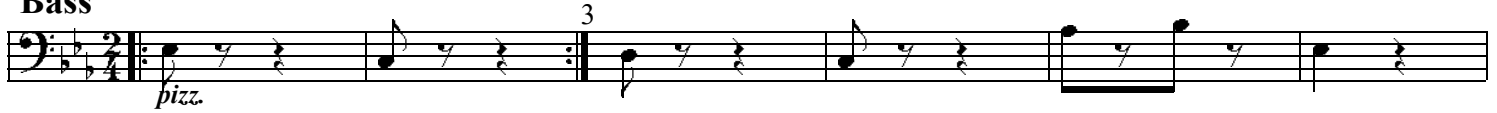
# "Brown Skin"

Music by Eubie Blake

♩ = 120

## Bass

1  
*pizz.* 3



7  
*arco*



12



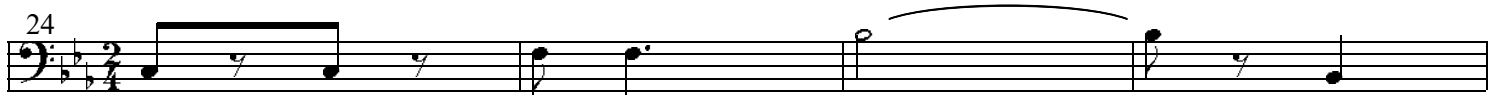
16



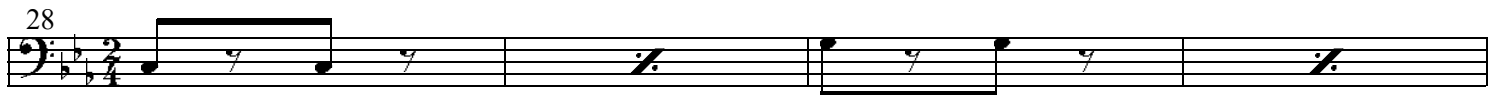
20



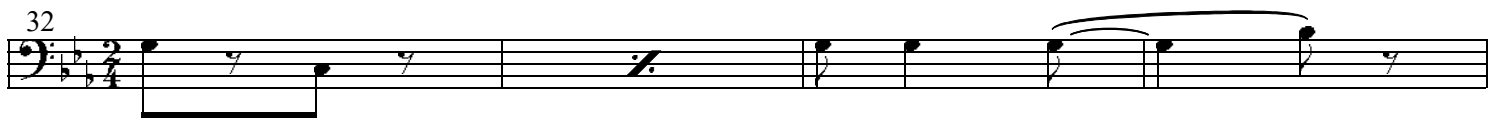
24



28



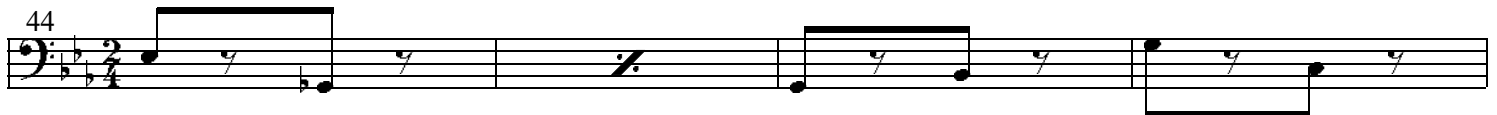
32



36 3 3



44



48 1. 32.







64

68

75

79

83

87

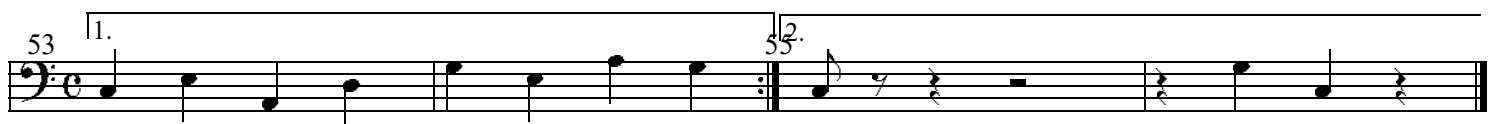
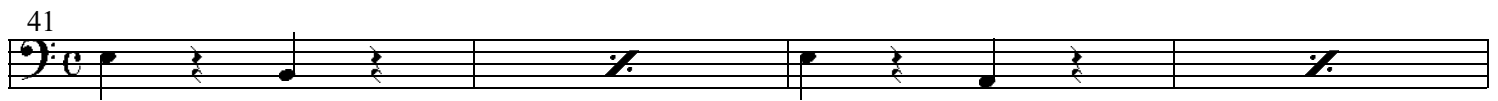
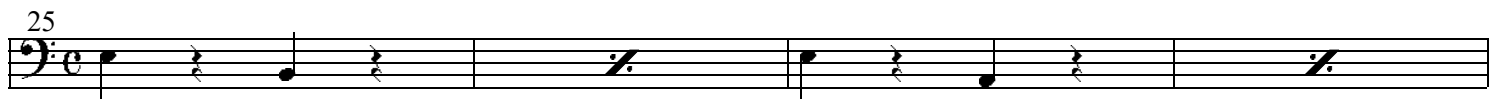
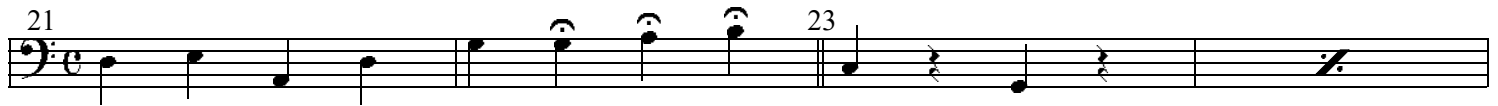
91

# "I'm Craving For that Kind of Love"

♩=120

Music by Eubie Blake & Lyrics by Noble Sissle

## Bass

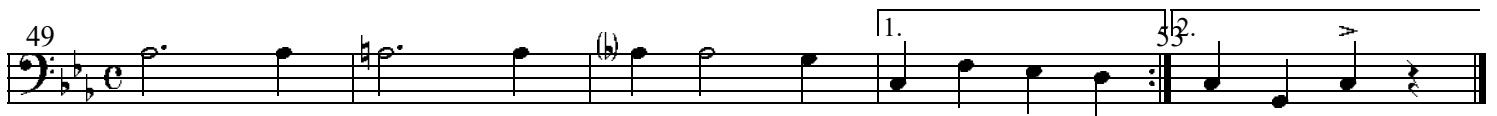
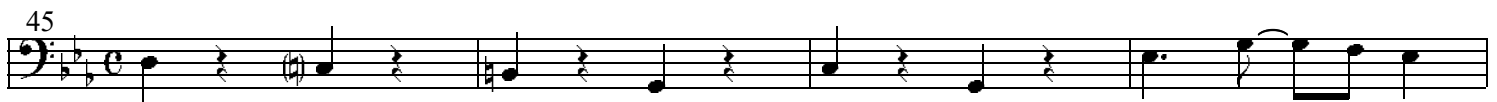




# "Serenade Blues"

Music by Eubie Blake

Bass



# "Serenade Blues"

Special Chorus with Trombone Solo  
Music by Eubie Blake

♩=160

Bass



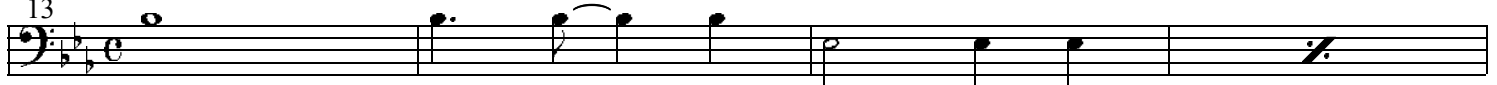
5



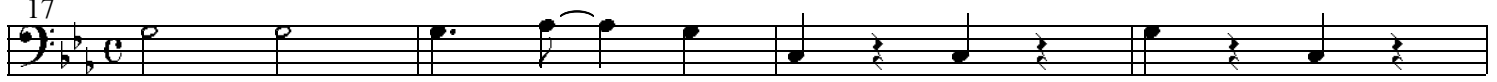
9



13



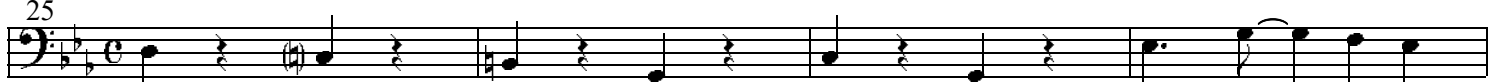
17



21



25



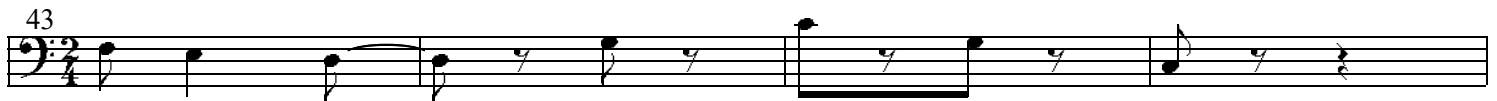
29



# "Sissle and Blake Entrance"

Music by Eubie Blake

Bass

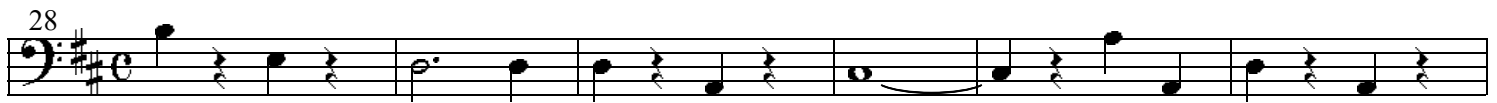
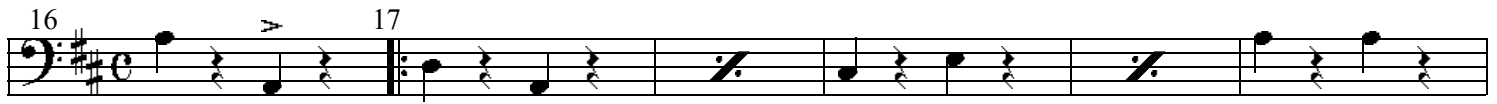
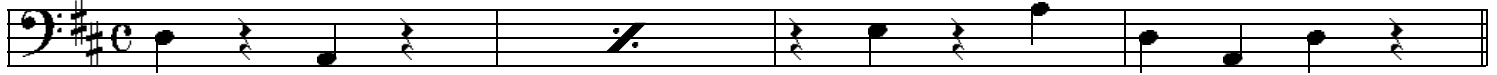


♩ = 120

# "Baltimore Buzz"

Music by Eubie Blake

Bass





# *Shuffle Along*



ORCHESTRA SCORE

*of*

“SHUFFLE ALONG”

*by*

SISSLE and BLAKE

**Books for**  
**Flute, Oboe, Clarinet, 1st & 2nd Cornet,**  
**Trombone,**  
**Drums & Bells, 1st & 2nd Violin,**  
**Viola, Cello, Bass, Piano**

***Re-edited by Klaus Pehl © 2022***